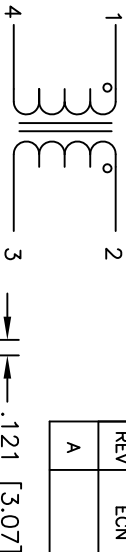


The information contained in this drawing is the sole property of CMS Coil Winding Specialist. Any reproduction in part or whole without written permission of CMS Coil Winding Specialist is prohibited.

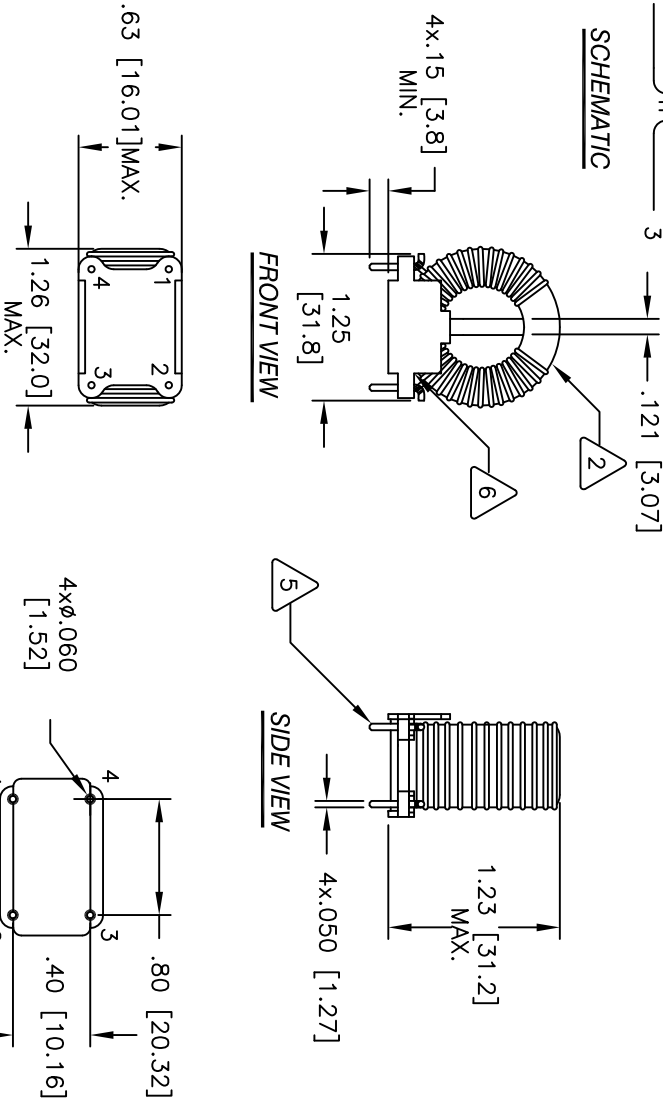
REVISION HISTORY					
REV	ECN	DESCRIPTION	SIGN & DATE		
			BY	DATE	CHK DATE
A		PRODUCTION RELEASE	RUU	4/18/07	JLUU 4/18/07



SCHEMATIC

FRONT VIEW

SIDE VIEW



BOTTOM VIEW

MOUNTING HOLES PATTERN

- WIND BOTH COILS EVENLY SPACED
CONSTRUCTION:
MAX LEAKAGE INDUCTANCE = 23.0uH
TYPICAL SRF = 1.2MHz
HI-POT TEST FOR INTERWINDING ISOLATION = 1250VDC
MAX. TEMP RISE AT RATED CURRENT = 35°C
RATED CURRENT = 3.2 AMPS AC MAX
DCR= 15.6 MILLI-OHMS MAX. PER SIDE
L= 1.0 mH MIN. +25% (100kHz, <1Vrms)
SPECIFICATIONS @ 25°C
 - WIRE: UL RECOGNIZED 155°C OR 200°C RATED MAGNET WIRE
CWS BYTEMARK OR OTHER APPROVED PART
CORE: COATED FERRITE TOROID, HIGH PERM MNZN
 - RATING CLASS B (130°C) REQUIRED
MATERIAL: UL RECOGNIZED 94V-0 FLAMMABILITY FOR BOBBIN
- NOTES: UNLESS OTHERWISE SPECIFIED. READ FROM BOTTOM UP.

CODE		MFG. P/N	DESCRIPTION	ITEM NO.
IDENT				
PARTS LIST				
AUTOCAD	X			
SOLIDWORKS				
SIGN	DATE			
DRWN	RUU	4/18/07	COLIWS COM, INC 353 W GROVE AVENUE ORANGE, CA 92665	CWS Coil Winding Specialist.
CHKD	JLUU	4/18/07		
ENGR.	KSUM	4/18/07		
APPR.	JLUU	4/18/07		
TITLE:		Common Mode Line Chokes		
SIZE		DWG. NO.	PM-12-102U-3.2A	REV
SCALE		B		A
1=1				
SHEET		1	OF	1